

- 1
- 2
- 3
- 4
- 5
- 6
- 7
- 8
- 9
- 10
- 11
- 12
- 13
- 14
- 15
- 16
- 17
- 18

TYPES

- Type **A**: without sealing washers
- Type **B**: with sealing washers

Main specifications

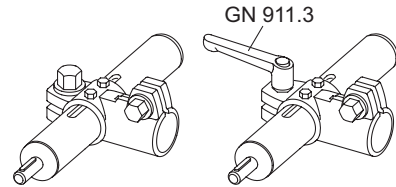
- AISI CF-8 stainless steel
- Sandblasted matte finish
- Sleeve bearing
- Plastic (PTFE)
- Carriage bolt DIN 603
- Stainless steel
- Cap nuts DIN 917 / Washers
- Stainless steel
- Seals
- Sealing washers
- Plastic (Polyacetal POM)
- Spacer ring
- Silicon, 40 ... 60 Shore A

FEATURES AND APPLICATIONS

T-angle linear actuator connectors GN 192.15 are based on T-angle connector clamps. The additionally provided mounting holes are used to connect to the drive key of a linear actuator. Bores with the designation **G** are equipped with sleeve bearings. With the screw locations z2, the play of the guide bore d1 can be adjusted or the linear actuator connectors can be clamped after adjustment. Type B is equipped with seals at the screw locations. For quick clamping without tools, the cap nuts can be replaced by the adjustable hand levers GN 911.3 (see page) listed in the table as accessories.

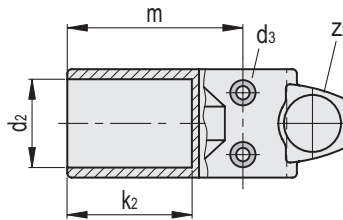
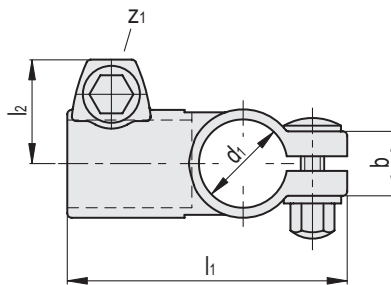
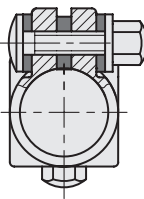
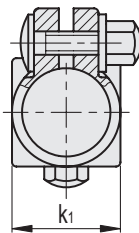
ACCESSORY

Adjustable Hand Levers GN 911.3 (see page).



GN 192.15-A

GN 192.15-B



Conversion Table	
1 mm = 0.039 inch	
d1	
mm	inch
30	1.17
50	1.95

GN 192.15-A

Code	Description	d1 Bore with sleeve bearing	d2	d3	b	k1	k2	l1	l2	m	z1	z2	z1 Clamping kit	z2 Clamping kit	⚖️
GN.48971	GN 192.15-G30-B30-A-4	G 30	B 30	M 4	22	37	42	96	35	60	M 8	M 8	GN 911.3-63 / GN 911.3-78	GN 911.3-63 / GN 911.3-78	320
GN.48975	GN 192.15-G50-B50-A-4	G 50	B 50	M 6	30	65	75	151.5	48.5	103	M 10	M 10	GN 911.3-78 / GN 911.3-92	GN 911.3-78 / GN 911.3-92	1023

GN 192.15-B

Code	Description	d1 Bore with sleeve bearing	d2	d3	b	k1	k2	l1	l2	m	z1	z2	z1 Clamping kit	z2 Clamping kit	⚖️
GN.48973	GN 192.15-G30-B30-B-4	G 30	B 50	M 4	22	37	42	96	35	60	M 8	M 8	GN 911.3-63 / GN 911.3-78	GN 911.3-63 / GN 911.3-78	320
GN.48977	GN 192.15-G50-B50-B-4	G 50	B 50	M 6	30	65	75	151.5	48.5	103	M 10	M 10	GN 911.3-78 / GN 911.3-92	GN 911.3-78 / GN 911.3-92	1023